



DIEMME



SISTEMA **Neutral**

Kappa Neutral System (Patent Pending)

**不活性ガス環境下でのブドウの除梗破碎システム
ディエメ「カッパ・ニュートラル」**

- Kappa15 Neutral は、除梗破碎段階での酸化を抑え、特にデリケートな香りの表現が求められる白ワインの品質向上に大きく寄与。
- 液化炭酸ガスなどを用いる方法と比べ、作業性・ランニングコストが改善、人手が省けるほか、「酸素濃度の量的管理」による「再現性」が違います！
- きた産業（日本）からの要請やアイデアも取り入れて商品化された、世界初の量産機！

「大型受け入れホッパー」から、不活性ガス濃度を徐々に高めながら「エレベーターコンベア」で搬送

酵素・薬剤添加用
ダイヤフラムポンプ

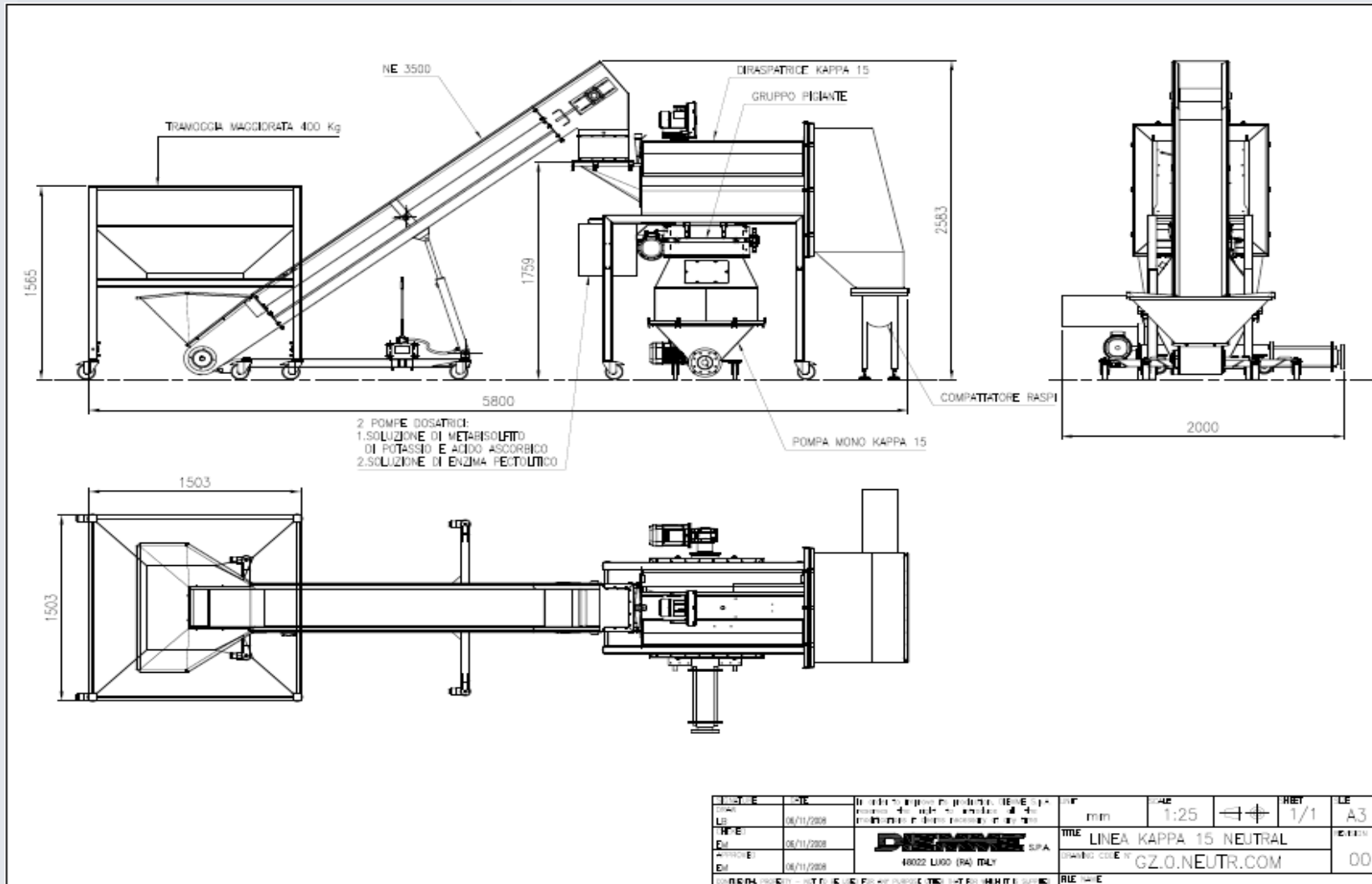
酸素濃度メーター（オプション）
により、定量的管理が可能

- 除梗～破碎～モノポンプまで、N₂ や CO₂ あるいはその両方を機械に供給して不活性ガス雰囲気を保ち、還元的除梗破碎処理が可能（ガス供給量 11～16Nm³/h で、酸素濃度参考値 3.5～4.5v/v%。注：空気中の酸素は 20v/v%。）
- 梗排出口には梗集積ユニットが設けられ、この部分からのガス流出、酸素進入を抑制
- 除梗ユニット上部のプロワーが不活性ガスを循環、効率よく不活性ガスを利用



DIEMME Kappa 15 Neutral System

SISTEMA **Neutral**





DIEMME

SISTEMA **Neutral**

Destemming-crushing in inert atmosphere

Kappa 15 Neutral System

Stalks ejector and compactor

Device for inert gas recycling

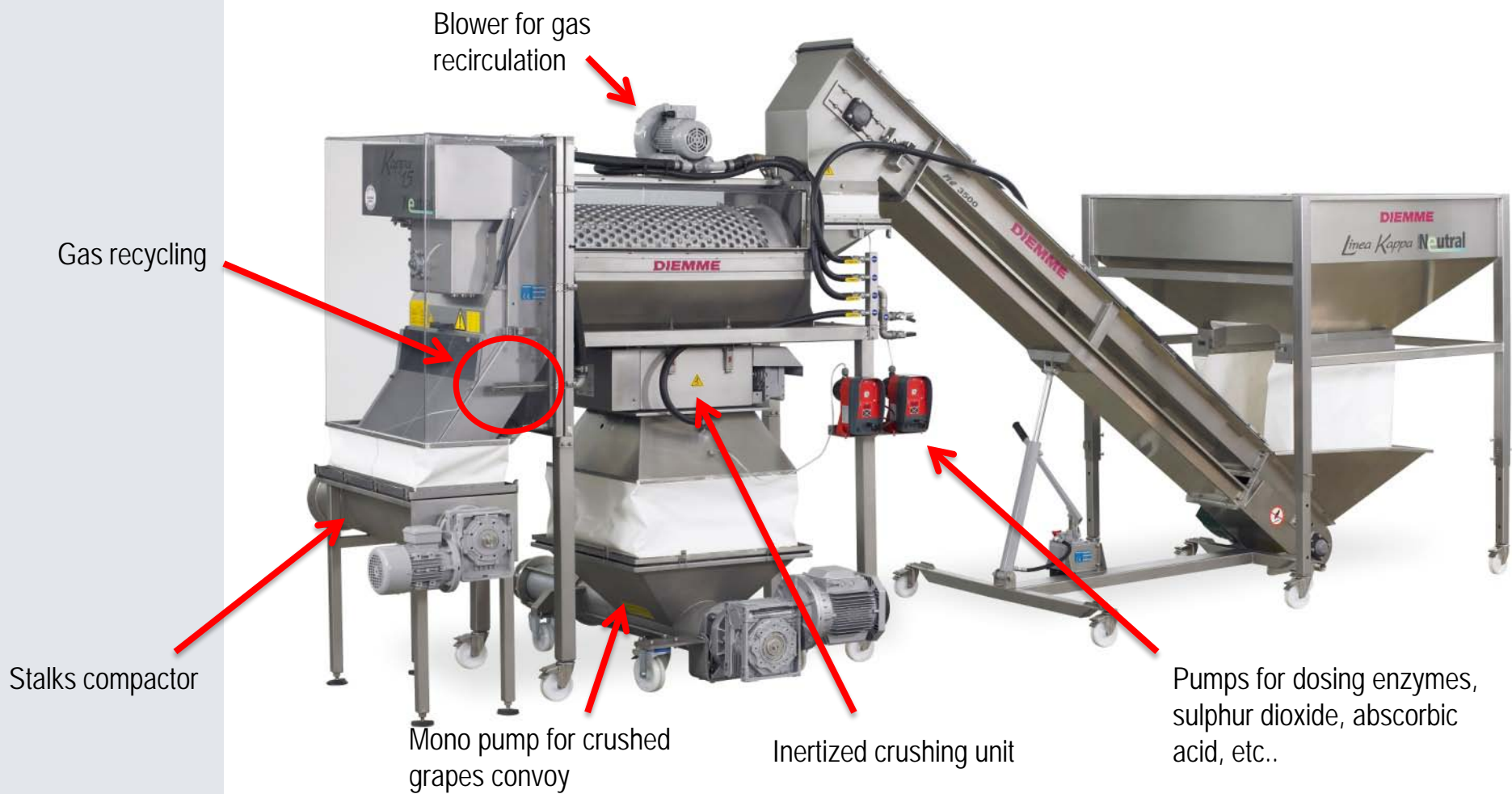
Detail of stalks ejection





DIEMME

SISTEMA **Neutral**



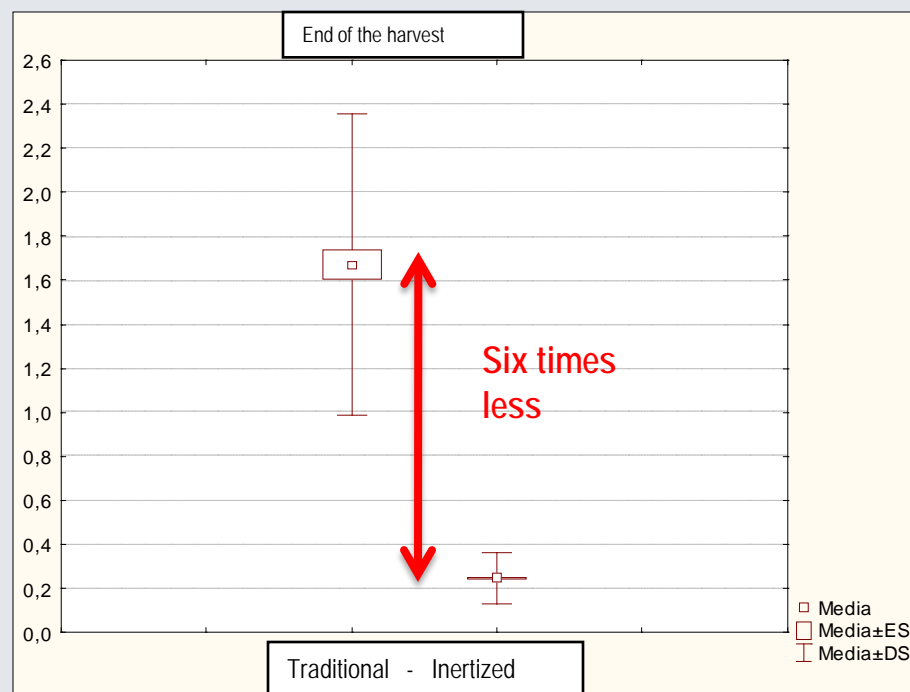
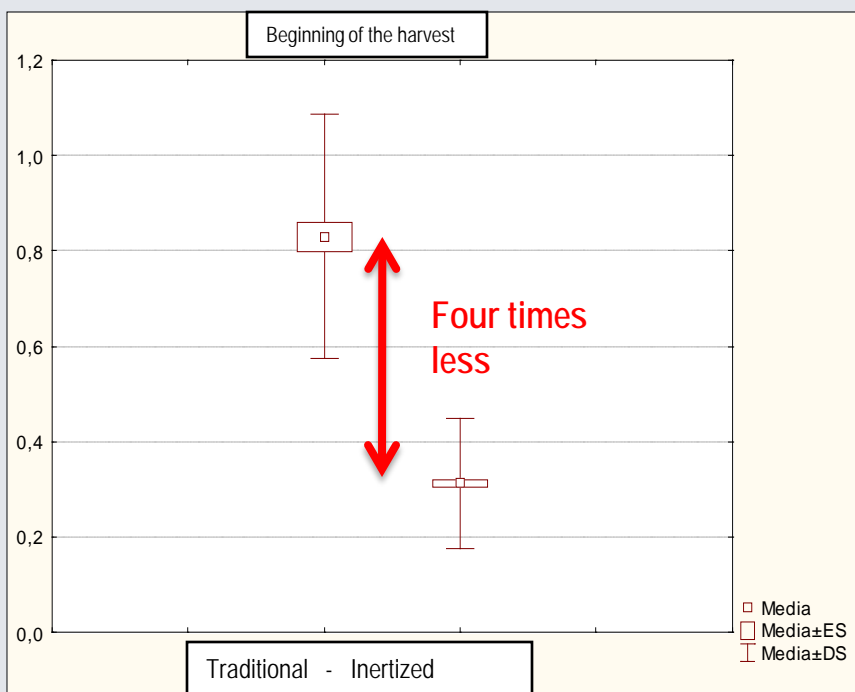


DIEMME

SISTEMA **Neutral**

The diagrams put in relation the averages of values of dissolved oxygen expressed in mg/l of O₂ dissolved in the juice at the beginning and at the end of the vintage.

It must be noticed that, for the test made in inert atmosphere, the content of dissolved oxygen detected at the outlet of the Neutral Kappa is 4 and 6 times lower than the one we could achieve working with a crusher not inertized.



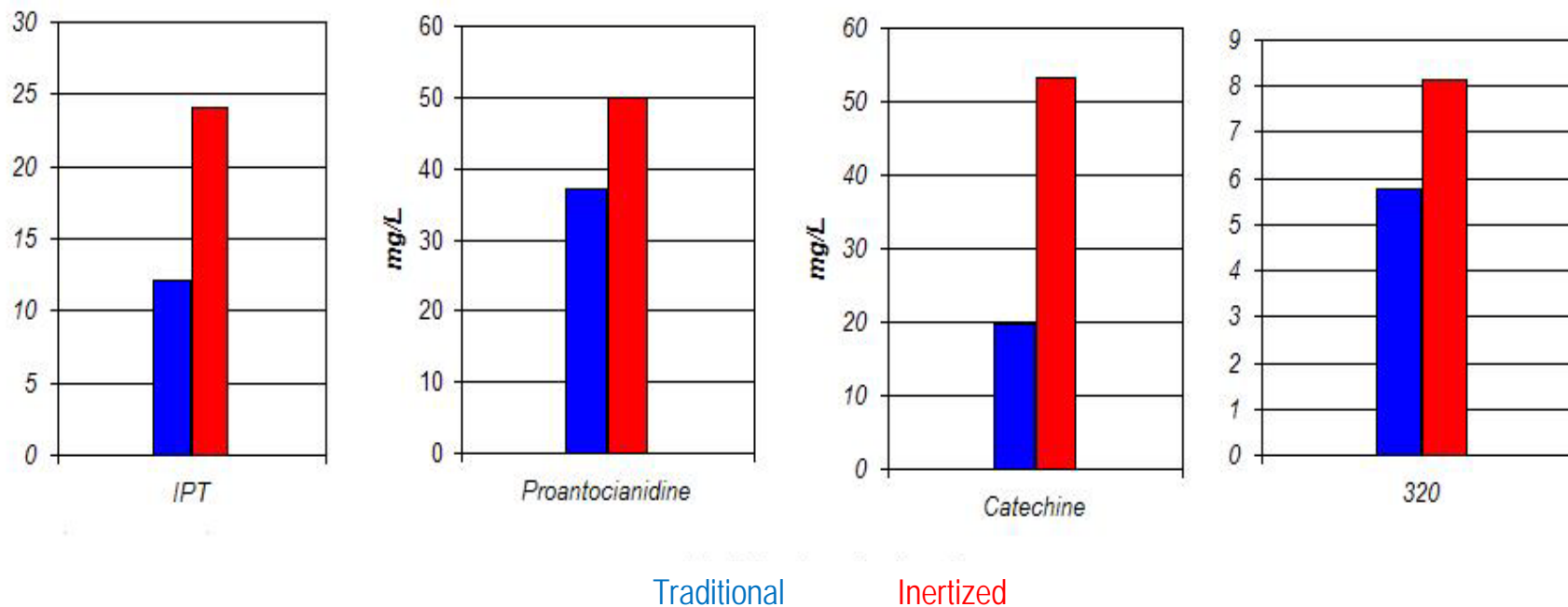


DIEMME

SISTEMA **Neutral**

Kappa 15 Neutral System- RESULTS

Here are some results regarding important parameters for quality white wines: blue is must extracted from traditional process, red is must extracted from inertised "K Neutral" system.



The smaller presence of oxygen in the production process is likewise demonstrable by the fact that some easily oxidizable substances result to be present in larger quantity, operating with the Kappa Neutral. As index we have considered those substances which for their nature easily run into oxidation phenomena.

The Diemme logo consists of the word "DIEMME" in a bold, purple, sans-serif font. Below the text is a horizontal grey swoosh that tapers at both ends.

DIEMME

DIEMME S.p.A.

Lugo (RA) Italia

www.diemme-spa.com

winediv@diemme-spa.com

きた産業株式会社